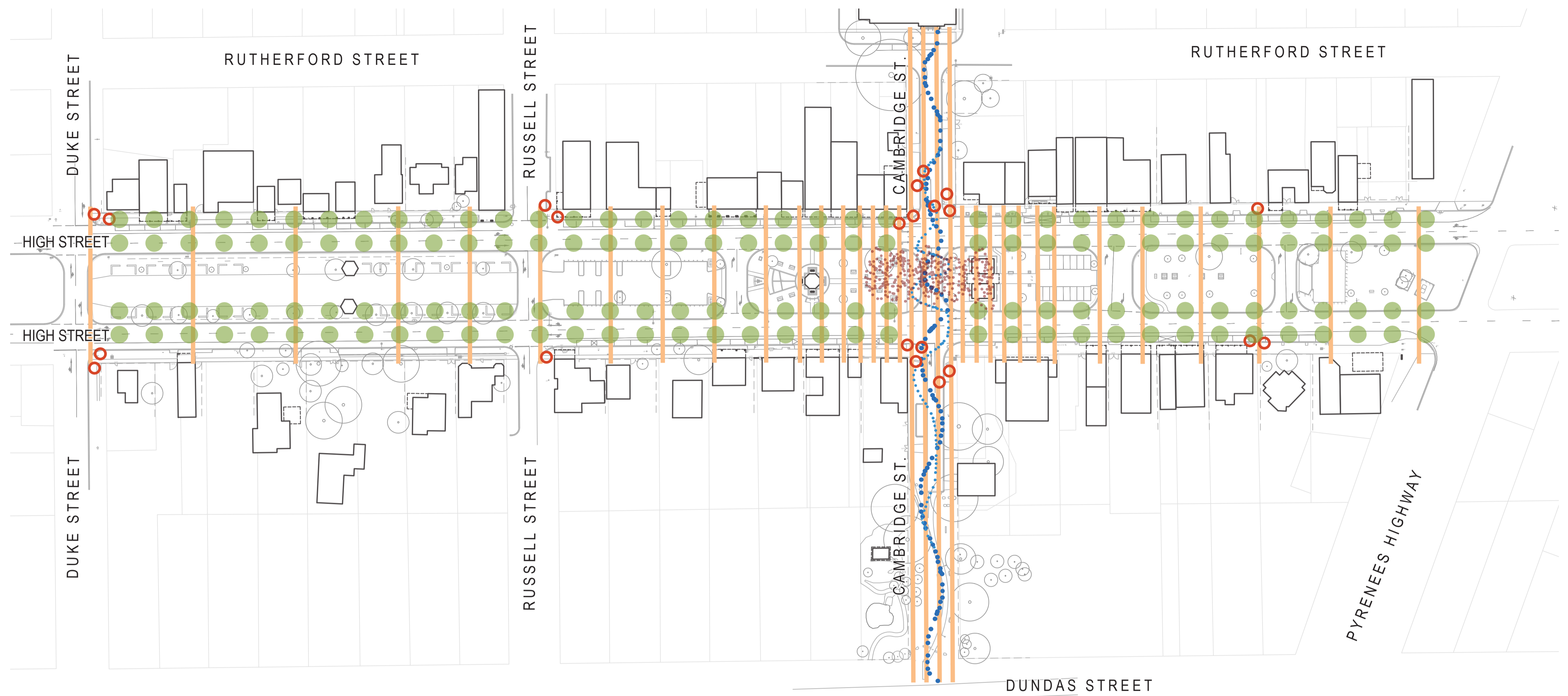


**DESIGN INSPIRATION**

There are a number of unique local qualities and features which have informed the concept design of the Avoca High Street precinct:

The weathered natural beauty and complex local geology of the Victorian central highlands landscape; the site's gold rush and aboriginal history; and more recently the establishment of the Pyrenees wine and tourism region of which Avoca is at the heart.

There are many opportunities to draw on these themes in developing a site specific design that both responds to the local surroundings and Avoca's rich history.



Vineyards

Landscapes defined by the parallel lines of rows of grapevines growing. This familiar Pyrenees geometry is featured in the design as a paving treatment using local stone, the banding starting off as an occasional reference as you enter the precinct gradually intensifies approaching the Cambridge Street Civic spine, highlighting the central precinct and unifying the whole streetscape.

Wine Barrels

Also referencing the Pyrenees region, the rounded shape and warmth of timber barrels is subtly referenced in the design of the street furniture at key social gathering nodes located along the street.

Avoca River

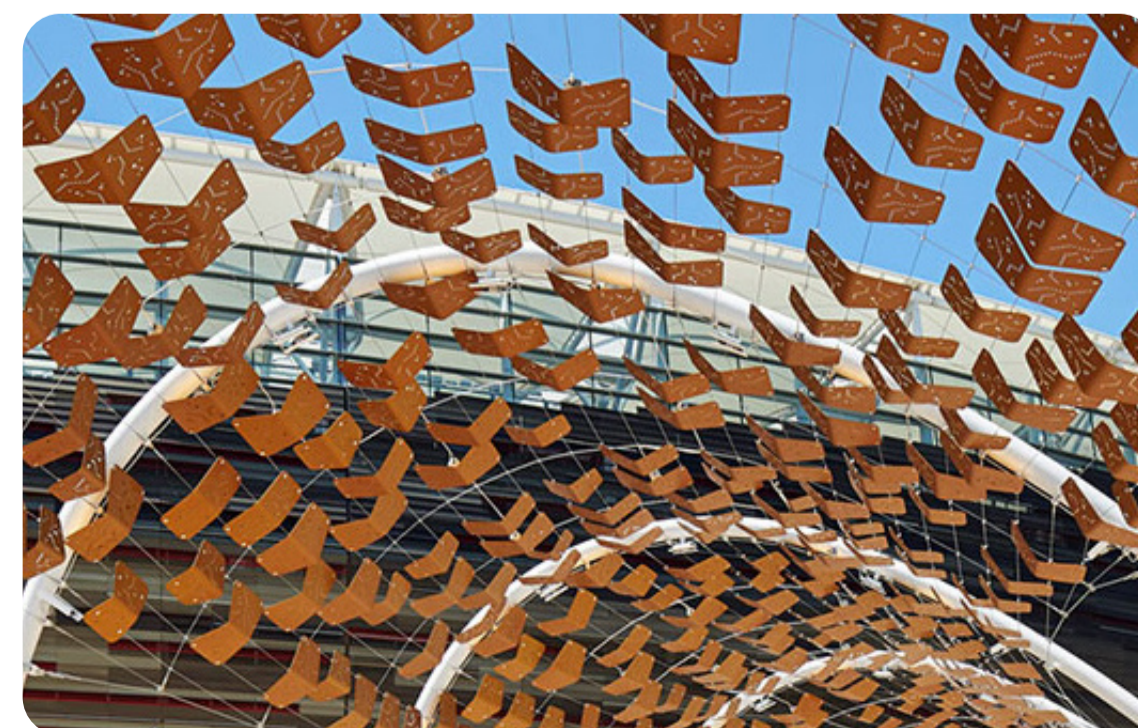
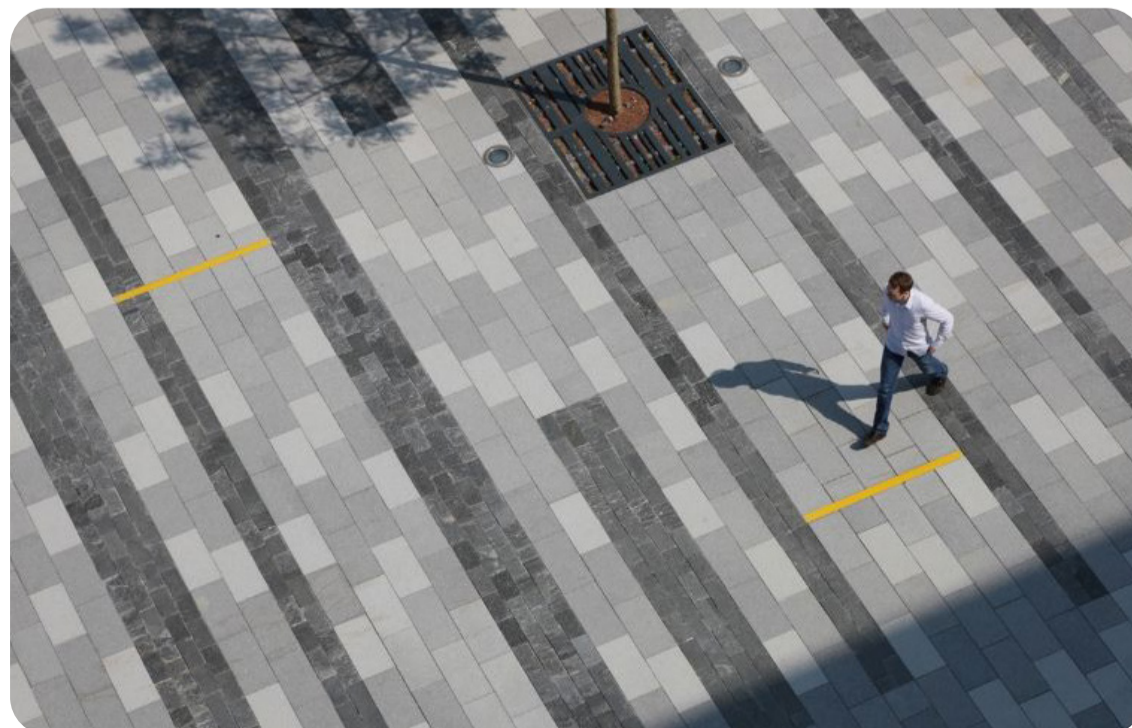
The Avoca River has the most variable flow of all the rivers in the Murray Darling Basin, ranging from months of drought to periods of intense flooding. The meandering course of the river is referenced in the paving treatment along the Cambridge Street Civic Spine, which links High Street and the Avoca Town Hall to the river itself.

Grapes on Wires

The shape of grape vine tendrils are also reminiscent of the winding course of the Avoca River and is referenced in the design of the paving within the Central Square. There are also opportunities to incorporate the form into a shade structure or lighting feature.

Grand Boulevard

Establishing a grand boulevard of consistent street trees along the length of the High Street precinct will not only improve the amenity of the street, but will also contribute to establishing a consistent identity for the centre of the Avoca Township.



FOR: REVIEW		REV	AMENDMENTS	DATE	BY
DRAWN: ACLA	DATE: 17.09.19	B	COUNCIL FEEDBACK	20.12.19	MB
PROJECT N°: 1924	DWG N°: 1924-MP1	C	COUNCIL FEEDBACK	31.01.20	MB
		D	COUNCIL FEEDBACK	04.02.20	MB
		E	COUNCIL FEEDBACK	12.02.20	MB



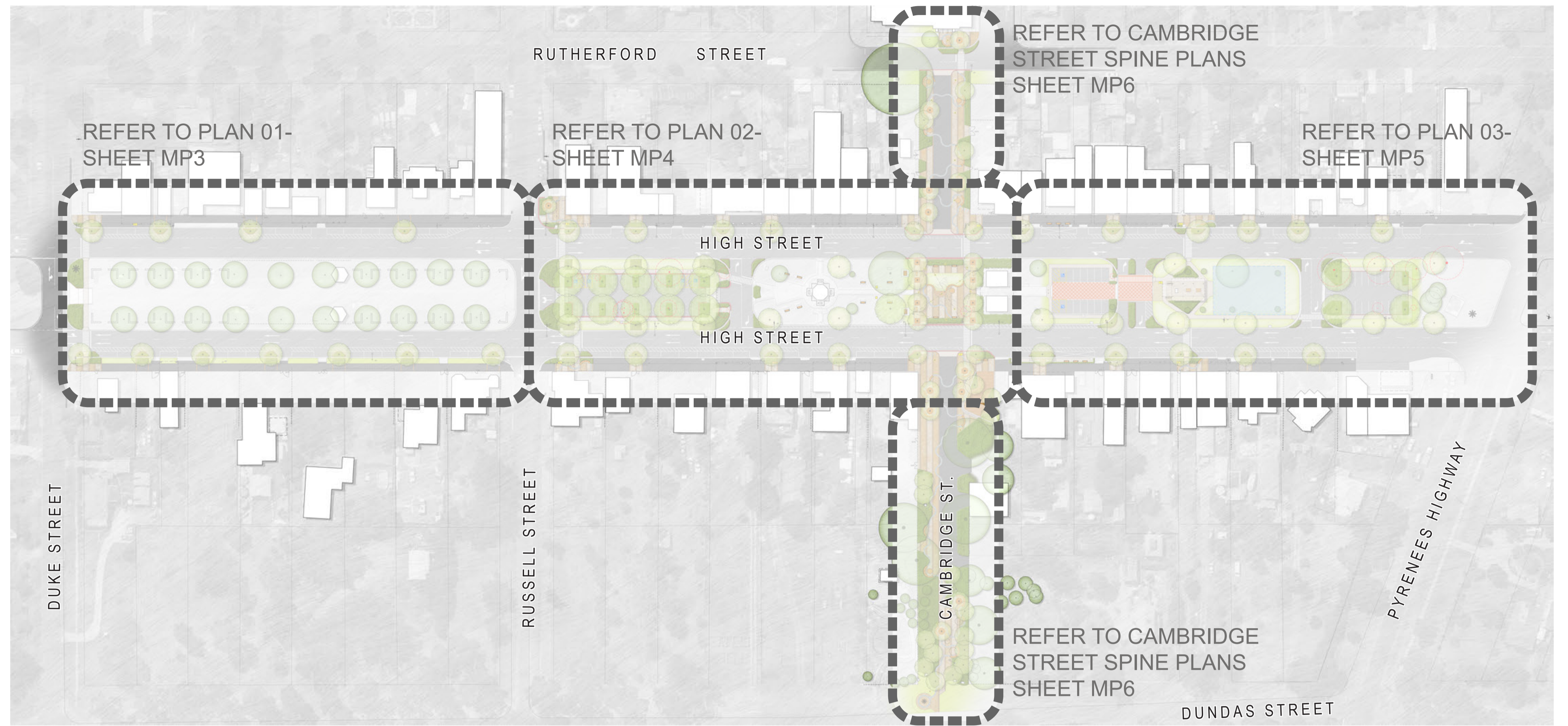
**AVOCA HIGH STREET - VISION STATEMENT**

The Avoca High Street Master Plan aims to provide a vision for the future of the central precinct of the Avoca township.

The High Street precinct is, and will continue to be the focus of community pride and activity. Its redevelopment will address a number of infrastructure shortfalls, improving the visual amenity of the street as well as helping to mitigate windy conditions and temperature extremes currently experienced by the precinct. This will include the incorporation of new elements such as furniture, paving and high canopy street tree planting.

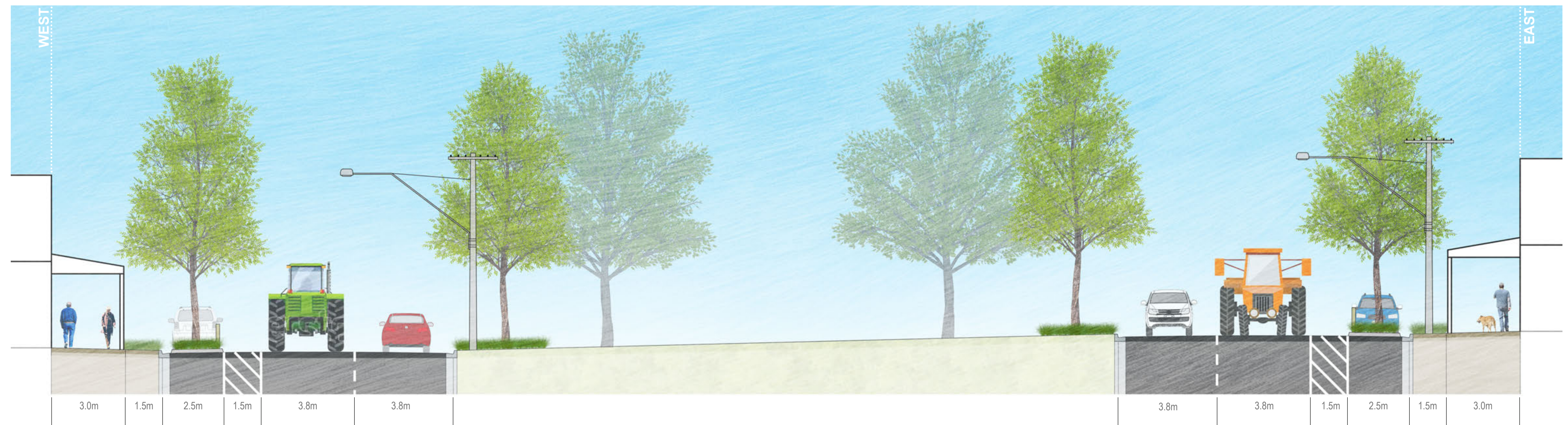
Upgrades to the street will help to contain and better define the physical extent of the streetscape, slowing traffic, encouraging visitation and consolidation of the High Street precinct core. The street will retain its rural character, while also becoming more accessible, consistent and connected to the rich history and surrounding landscape, showcasing the unique qualities of the region.

The High Street precinct will be an excellent place to gather and socialise for both visitors exploring the region and the local community, living up to its name as the heart of the Pyrenees.



**TYPICAL HIGH STREET SECTION**

SCALE 1:500 @ A1 / 1:1000 @ A3

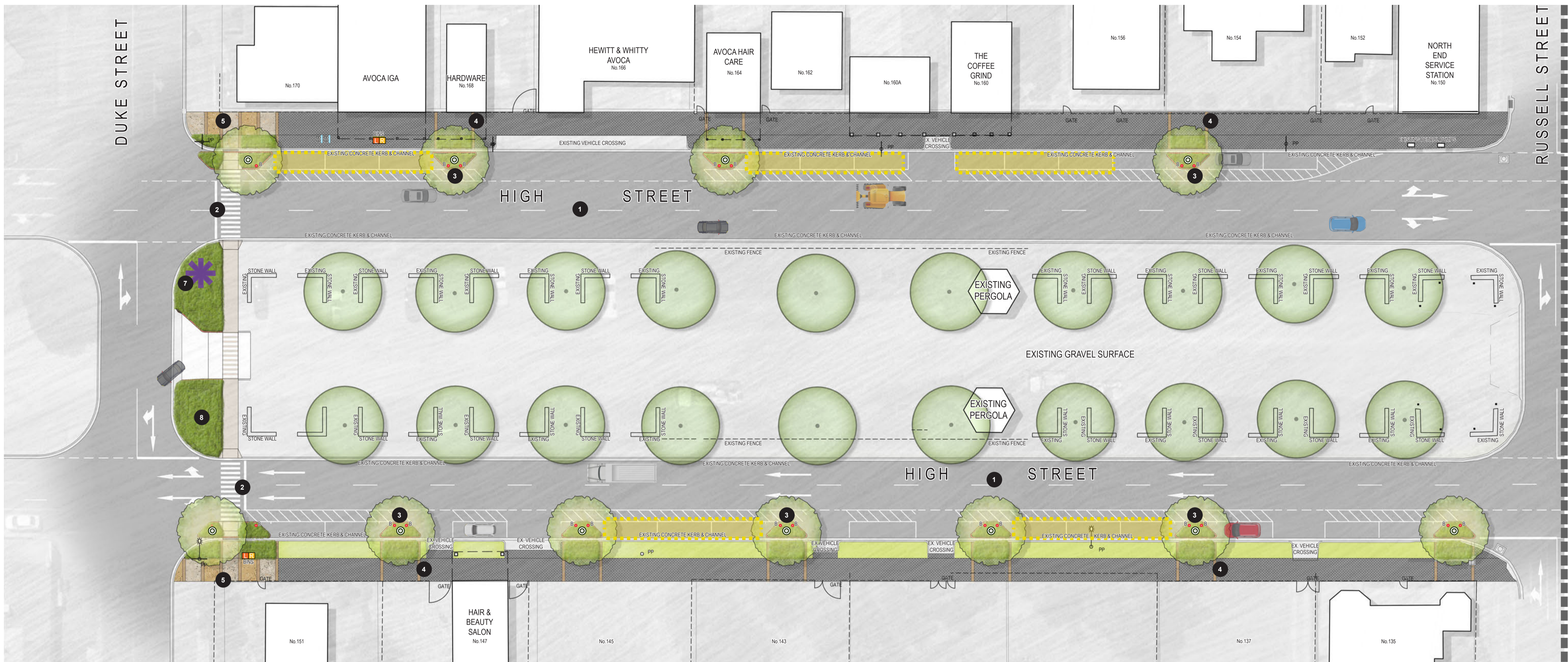


**TYPICAL PROPOSED HIGH STREET SECTION**

SCALE 1:100 @ A1 / 1:200 @ A3

FOR: REVIEW		REV	AMENDMENTS	DATE	BY
DRAWN: ACL A	DATE: 17.09.19	B	COUNCIL FEEDBACK	20.12.19	MB
PROJECT N°: 1924	DWG N°: 1924-MP2	C	COUNCIL FEEDBACK	31.01.20	MB
		D	COUNCIL FEEDBACK	04.02.20	MB
		E	COUNCIL FEEDBACK	12.02.20	MB





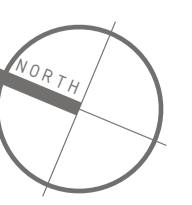
MATCH LINE - REFER TO PLAN 02 SHEET MP3

**LEGEND**

- Existing Trees to be Retained
- Proposed High Street Avenue Trees *Quercus coccinea* - Scarlet Oak
- Proposed grass
- Proposed Garden Bed *Groundcover, tufted and shrub species*
- Proposed Pedestrian Asphalt Paving
- Road Asphalt Paving
- Proposed Concrete Paving *Groundcover, tufted and shrub species*
- Proposed Feature Paving *Exposed aggregate concrete paving with feature stone banding*
- Proposed Feature Stone Banding in Asphalt Paving
- Existing Power Poles/ Light Poles
- Existing Kerbs
- Proposed Kerbs
- Proposed Bollard
- Proposed Bike Rails
- Proposed Bins Enclosures
- Proposed Public Artwork
- Class A Long Vehicle Parking

**NOTES**

- 1** Retain double lane carriageway in both directions along High Street. Consider the reduction of speed limit along High Street to 50km/h to slow vehicular movement and improve pedestrian safety along the central High Street Precinct.
- 2** Proposed designated pedestrian crossing point across High Street with 'Zebra' line-marking and warning lights.
- 3** Proposed kerb out-stands with Avenue Tree planting at regular intervals along High Street in between parallel parking bays to establish a Grand Boulevard. Consider providing up lighting to avenue trees to further enhance the streetscape at night.
- 4** Proposed strips of parallel feature paving bands in footpaths along High Street aligning with tree planting bays.
- 5** Proposed feature paving at crossing points highlighting the entrance to the Avoca Central Precinct.
- 6** Introduce a consistent style of street furniture including seats, benches, bike racks, drink fountains, litter and recycling bins.
- 7** Proposed sculpture to highlight the arrival to the Avoca central precinct.
- 8** Proposed low planting within the median strip to soften its visual harshness. Consider smaller areas of planting around crossing points rather than planting along the full length of High Street.







MATCH LINE - REFER TO PLAN 01 SHEET MP3

MATCH LINE - REFER TO PLAN 03 SHEET MP5

**LEGEND**

- |  |   |  |  |  |                                       |
|--|---|--|--|--|---------------------------------------|
|  | Existing Trees to be removed  |  | Existing Power Poles/ Light Poles  |  | Proposed Custom Curved Social Seating |
|  | Existing Trees to be Retained   |  | Existing Kerbs   |  | Proposed Circular Platform Seat       |
|  | Proposed High Street Avenue Trees<br><i>Quercus coccinea</i> - Scarlet Oak                              |  | Proposed Kerbs   |  | Proposed Picnic Setting               |
|  | Proposed Central Median Tree<br><i>Quercus canariensis</i> - Algerian Oak                               |  | Proposed grass   |  | Proposed Seat                         |
|  | Proposed Formalised Car Park Trees<br><i>Grevillea robusta</i> - Silky Oak                              |  | Proposed Garden Bed<br><i>Groundcover, tufted and shrub species</i>                            |  | Proposed Tree Grate                   |
|  | Proposed Central Square Feature Trees<br><i>Lagerstroemia indica x fauriei</i> 'Natchez' - Crepe Myrtle |  | Proposed Pedestrian Asphalt Paving   |  | Proposed Bollard                      |
|  | Proposed Secondary Street Trees<br><i>Eucalyptus mannifera</i> 'Little Spotty' - Dwarf Spotted Gum      |  | Road Asphalt Paving  |  | Proposed Bike Rails                   |
|  |   |  | Proposed Concrete Paving<br><i>Groundcover, tufted and shrub species</i>                       |  | Proposed Bins Enclosures              |
|  |   |  | Proposed Feature Paving<br><i>Exposed aggregate concrete paving with feature stone banding</i> |  | Proposed Pole Mounted Lights          |
|  |   |  | Proposed 'River' Feature Paving Band   |  | Class A Long Vehicle Parking          |

**NOTES**

- 1 Retain double lane carriageway in both directions along High Street. Consider the reduction of speed limit along High Street to 50km/h to slow vehicular movement and improve pedestrian safety along the central High Street Precinct.
- 2 Proposed designated pedestrian crossing point across High Street with 'Zebra' line-marking and warning lights.
- 3 Proposed kerb out-stands with Avenue Tree planting at regular intervals along High Street in between parallel parking bays to establish a Grand Boulevard. Consider providing up lighting to avenue trees to further enhance the streetscape at night.
- 4 Proposed strips of parallel feature paving bands in footpaths along High Street aligning with tree planting bays.
- 5 Proposed feature paving highlighting key pedestrian crossing points over high street Avoca Central Precinct.
- 6 Proposed upgrade to the existing car park in the central median with new kerbs, tree planting in out-stands, pedestrian access pathways, asphalt resurfacing and new line-marking including dedicated accessible parking spaces.
- 7 Proposed designated pedestrian crossing point connecting the upgraded central median car-park and the Avoca Soldier's Memorial.
- 8 Introduce a consistent style of street furniture including seats, benches, bike racks, drink fountains, litter and recycling bins.
- 9 Proposed conversion of the existing central median break into a new pedestrianised Central Square at the heart of the High Street precinct. The new square would be an open multifunctional space incorporating feature paving, social seating, feature tree planting, a raised deck/ stage and an overhead catenary wire lighting system incorporating a suspended sculptural shade canopy that references a grapevine growing on a wire.
- 10 Retain existing toilet blocks.





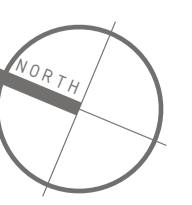
MATCH LINE - REFER TO PLAN 02 SHEET MP4

**LEGEND**

- Existing Trees to be removed
- Existing Trees to be Retained
- Proposed High Street Avenue Trees *Quercus coccinea* - Scarlet Oak
- Proposed Formalised Car Park Trees *Grevillea robusta* - Silky Oak
- Proposed grass
- Proposed Garden Bed *Groundcover, tufted and shrub species*
- Existing Power Poles/ Light Poles
- Existing Kerbs
- Proposed Kerbs
- Proposed Pedestrian Asphalt Paving
- Road Asphalt Paving
- Proposed Concrete Paving *Groundcover, tufted and shrub species*
- Proposed Feature Paving *Exposed aggregate concrete paving with feature stone banding*
- Proposed Shared Zone Line Marking
- Proposed Custom Curved Social Seating
- Proposed Picnic Setting
- Proposed Seat
- Proposed Bollard
- Proposed Bike Rails
- Proposed Bins Enclosures
- Proposed Public Artwork
- Class A Long Vehicle Parking

**NOTES**

- 1 Retain double lane carriageway in both directions along High Street. Consider the reduction of speed limit along High Street to 50km/h to slow vehicular movement and improve pedestrian safety along the central High Street Precinct.
- 2 Proposed designated pedestrian crossing point across High Street with 'Zebra' line-marking and warning lights.
- 3 Proposed kerb out-stands with Avenue Tree planting at regular intervals along High Street in between parallel parking bays to establish a Grand Boulevard. Consider providing up lighting to avenue trees to further enhance the streetscape at night.
- 4 Proposed strips of parallel feature paving bands in footpaths along High Street aligning with tree planting bays.
- 5 Proposed feature paving highlighting key pedestrian crossing points over high street Avoca Central Precinct.
- 6 Proposed upgrade to the existing car park in the central median with new kerbs, tree planting, pedestrian access pathways, sealed asphalt surface and new line-marking.
- 7 Proposed designated pedestrian zebra crossing points connecting the off street car-parking in the central medians to the BBQ and playspace area.
- 8 Introduce a consistent style of street furniture including seats, benches, bike racks, drink fountains, litter and recycling bins.
- 9 Proposed shared pedestrian/ vehicle zone
- 10 Proposed location for tourism bus to park.
- 11 New BBQ shelter.
- 12 Proposed Playspace. Refer to plans by Bricolage Design.
- 13 Proposed sculpture to highlight the arrival to the Avoca central precinct.







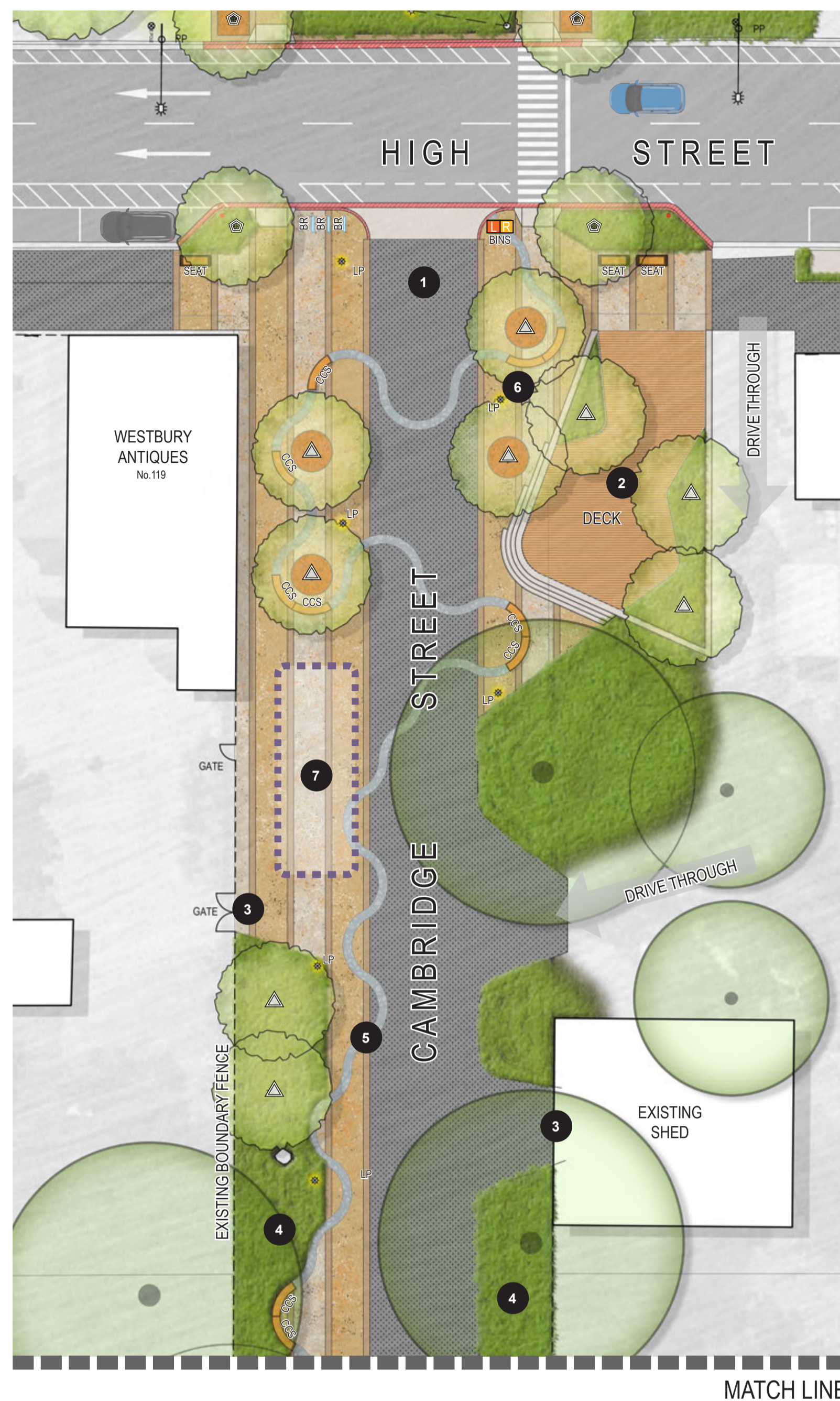
**PROPOSED CAMBRIDGE STREET SPINE EAST**

**NOTES**

- 1 Proposed shared pedestrian/vehicular zone along the Cambridge Street Civic Spine with the through traffic speed reduced to 10km/hr. Remove existing kerbs along Cambridge street. Consider a phased transition to a pedestrian only zone in the future if warranted by pedestrian usage patterns.
- 2 Proposed designated pedestrian crossing point across Rutherford Street with 'Zebra' line-marking.
- 3 Maintain vehicular access to property access points along Cambridge Street through the proposed shared zones.
- 4 Introduce buffer planting along boundary fences along Cambridge Street to soften the interface between public and private properties.
- 5 Proposed sinuous band of feature paving meandering along the full length of the Cambridge Street Civic Spine, providing a continuous linking element that references the Avoca River and connects High Street and the Avoca Town Hall to the river itself.
- 6 Provide custom social seating in key locations. The design of these seats subtly references the rounded shape and warmth of timber wine barrels.

**LEGEND**

- Existing Trees to be Retained
- Proposed Central Square Feature Trees *Lagerstroemia indica x fauriei* 'Natchez' - Crepe Myrtle
- Proposed Secondary Street Trees *Eucalyptus mannifera* 'Little Spotty' - Dwarf Spotted Gum
- Proposed grass
- Proposed Garden Bed *Groundcover, tufted and shrub species*
- Existing Power Poles/ Light Poles
- Existing Kerbs
- Proposed Kerbs
- Proposed Pedestrian Asphalt Paving
- Road Asphalt Paving
- Proposed Concrete Paving *Groundcover, tufted and shrub species*
- Proposed Feature Paving *Exposed aggregate concrete paving with feature stone banding*
- Proposed 'River' Feature Paving Band
- Proposed Custom Curved Social Seating
- Proposed Circular Platform Seat
- Proposed Seat
- Proposed Tree Grate
- Proposed Bollard
- Proposed Bike Rails
- Proposed Bins Enclosures
- Proposed Pole Mounted Lights
- Proposed Play Sculptures
- Proposed Public Artwork

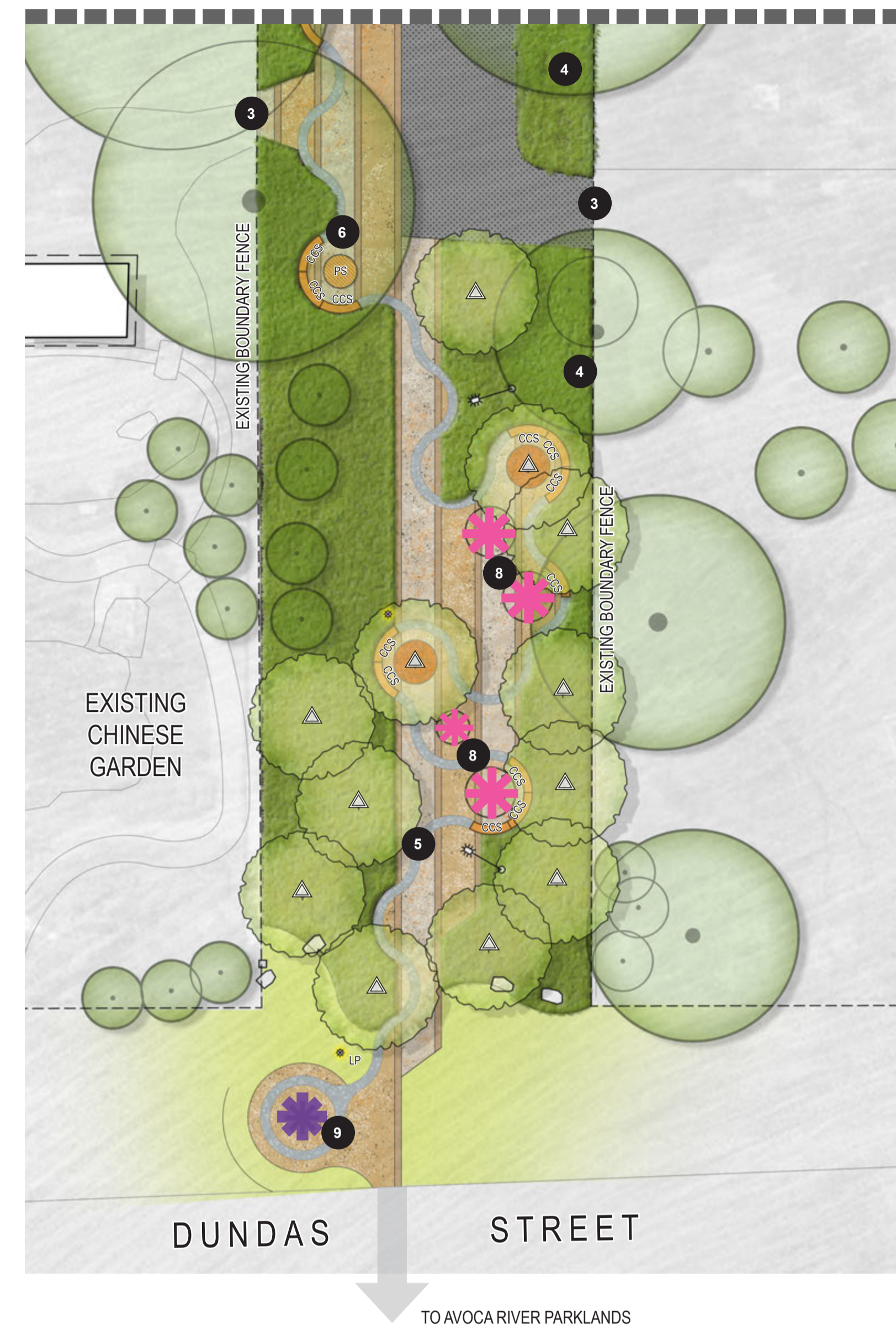


**PROPOSED CAMBRIDGE STREET SPINE WEST**

**NOTES**

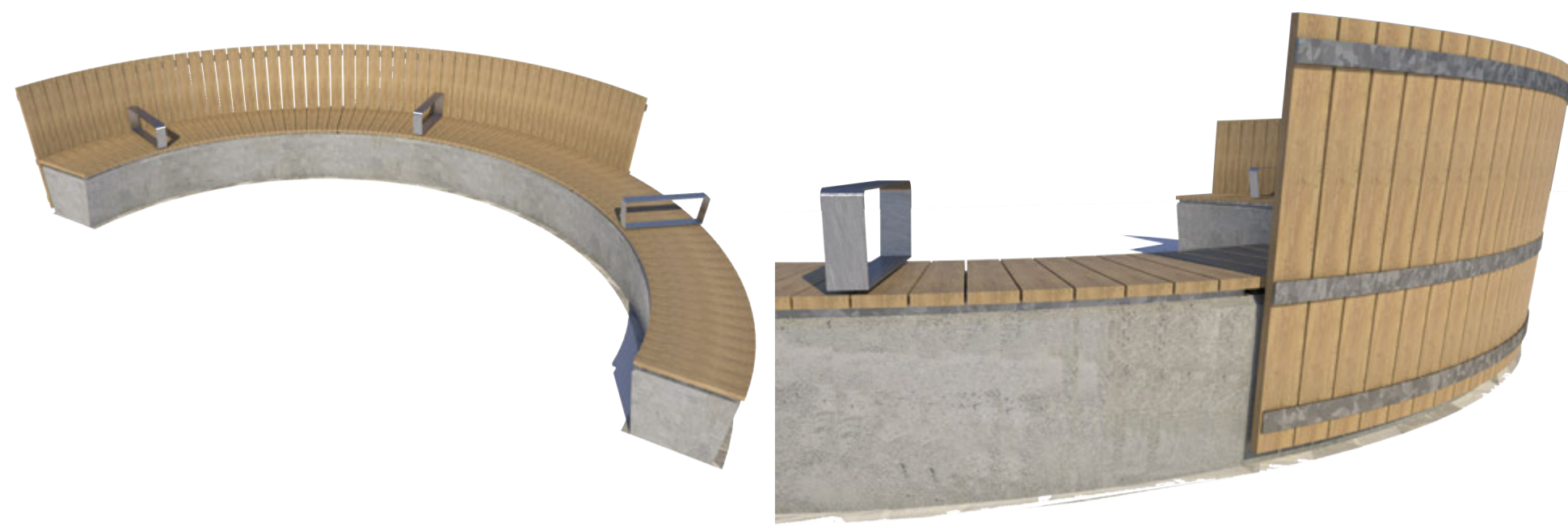
- 1 Proposed shared pedestrian/vehicular zone along the Cambridge Street Civic Spine with the through traffic speed reduced to 10km/hr. Remove existing kerbs along Cambridge street.
- 2 Proposed deck breakout space/outdoor eating area facing onto the central square and Cambridge Street Civic Spine to help activate the corner.
- 3 Maintain vehicular access to property access points along Cambridge Street through the proposed shared zones.
- 4 Introduce buffer planting along boundary fences along Cambridge Street to soften the interface between public and private properties.
- 5 Proposed sinuous band of feature paving meandering along the full length of the Cambridge Street Civic Spine, providing a continuous linking element that references the Avoca River and connects High Street and the Avoca Town Hall to the river itself.
- 6 Provide custom social seating in key locations. The design of these seats subtly references the rounded shape and warmth of timber wine barrels.
- 7 Proposed clear space that can be used temporarily for loading/unloading vehicles.
- 8 Proposed play sculpture zone providing an informal play area with interactive/playful sculptural elements.
- 9 Proposed sculpture to highlight the arrival to the Avoca central precinct. Provide public artwork to highlight the entry to the Cambridge Street Civic Spine from Dundas Street and the Avoca River parklands.

**MATCH LINE**





PROPOSED FURNITURE PALETTE



Custom modular curved social seating. Pre-cast concrete base with timber seats fixed to top. Potential for the materials and design to reference a wine barrel.



Platform seats



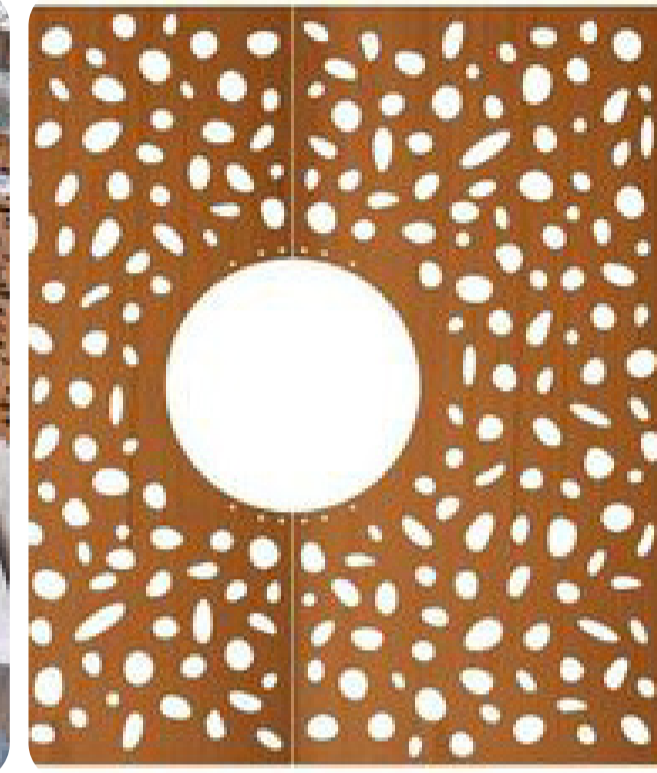
Seats - Potential to incorporate custom laser cut motif in side panel.



Custom Bike rails  
Potential for the design to reference the metal rings holding together a wine barrel.



Custom tree grates with custom laser cut motif

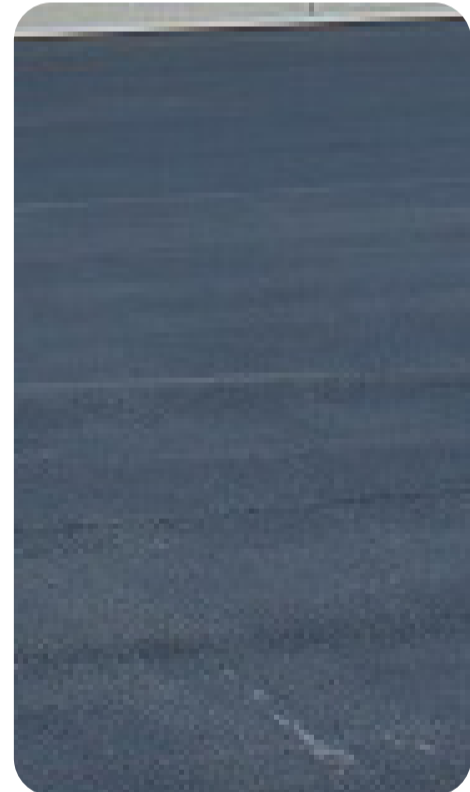


Bin enclosures - Potential to incorporate custom laser cut motif in door panels.



Bollards

PROPOSED MATERIALS PALETTE



Asphalt paving



Exposed aggregate concrete paving using aggregates from local Pyrenees quarries



Feature stone banding - Pyrenees Stone pavers



Feature 'River' feature paving along Cambridge Street central spine. Random Castlemaine Slate Stone Pavers/ Cobble Pavers



New BBQ Shelter



Timber Decking



Raised stage timber deck



Proposed street trees in kerb out-stands. Existing kerbs to be modified at road crossings to allow for pedestrian access



Proposed pedestrian crossings with 'zebra' line marking and warning lights

FOR: REVIEW	REV	AMENDMENTS	DATE	BY
DRAWN: ACLA	B	COUNCIL FEEDBACK	20.12.19	MB
PROJECT N°: 1924	C	COUNCIL FEEDBACK	31.01.20	MB
	D	COUNCIL FEEDBACK	04.02.20	MB
	E	COUNCIL FEEDBACK	12.02.20	MB



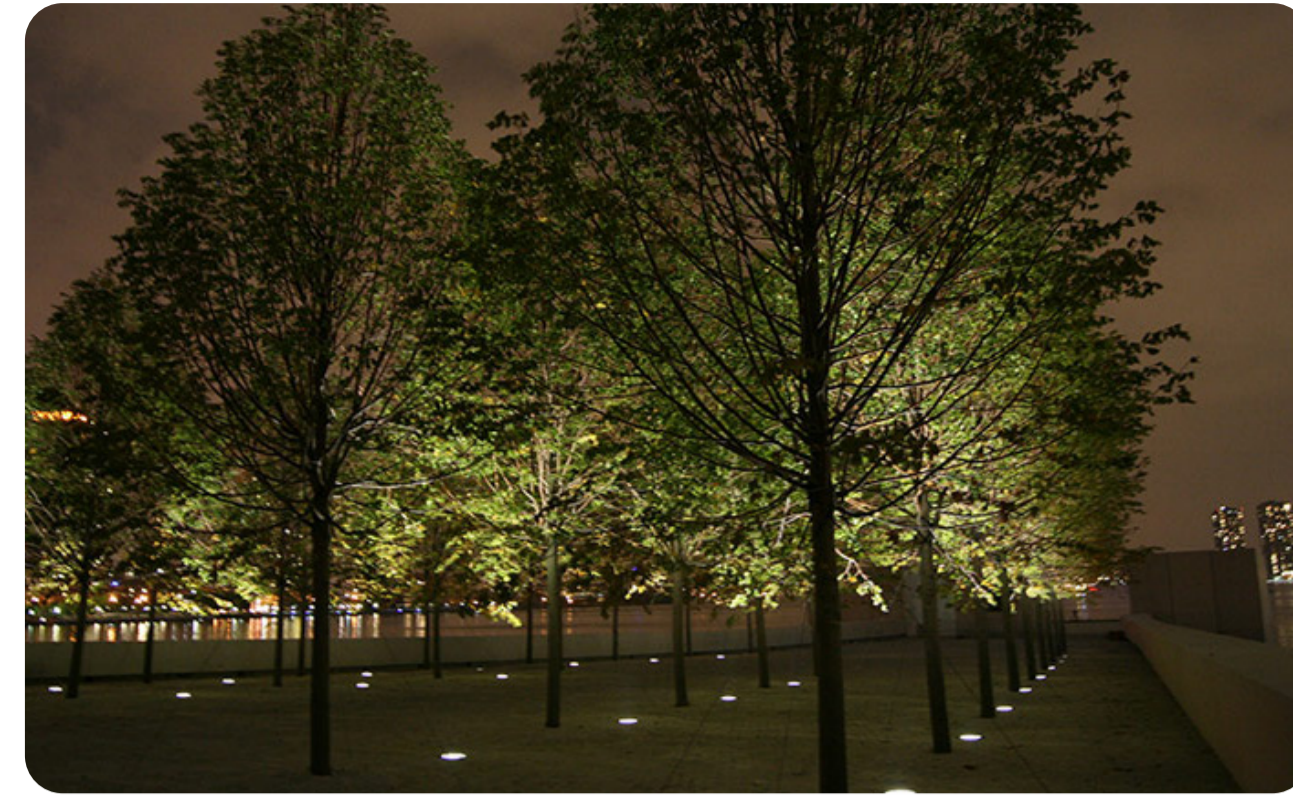
**PROPOSED LIGHTING**



Example of a Catenary lighting proposed for central square



Examples of pole top lights proposed for Cambridge Street pedestrian spine.

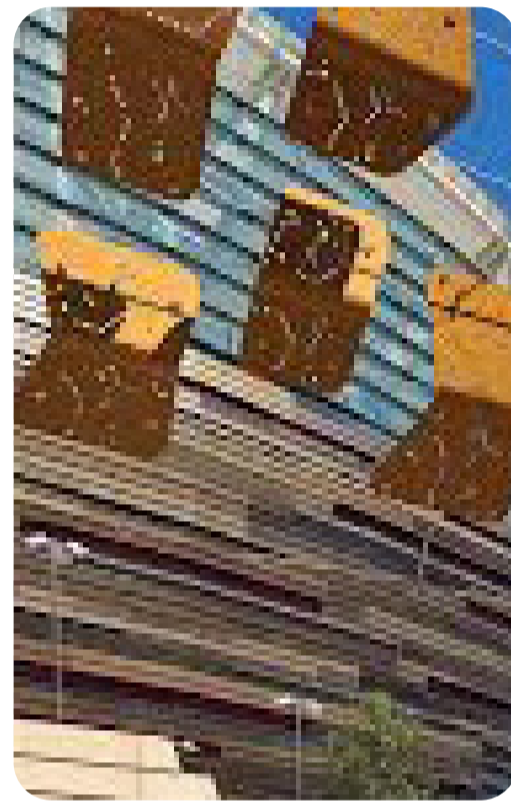


Proposed tree up lighting to emphasise High Street Avenue trees at night time.

**PROPOSED ARTWORK/ SCULPTURAL ELEMENTS**



Proposed lightweight sculptural shade canopy incorporated into part of the Catenary lighting over central square. The design could be an abstract reference the form of a vineyard grapevine on a wire



Proposed Public Artwork examples  
Located at key entrance points to High Street precinct.



Interactive sculptural play elements located within the Cambridge Street Civic Spine.



Proposed Public Artwork example for the Cambridge Street entry from Dundas Street.

**PROPOSED TREES**



Establish a new Grand Boulevard along High Street  
*Quercus coccinea* - Scarlet Oak  
12m high x 8m wide @ 20 years



Proposed tree planting to formalised car park  
*Grevillea robusta* - Silky Oak  
20m high x 15m wide @ 20 years



Proposed tree planting to median strip  
*Quercus canariensis* - Algerian Oak  
20m high x 20m wide @ 20 years



Proposed tree planting around the central square  
*Lagerstroemia indica x fauriei* 'Natchez' - Crepe Myrtle  
8m high x 6m wide @ 20 years

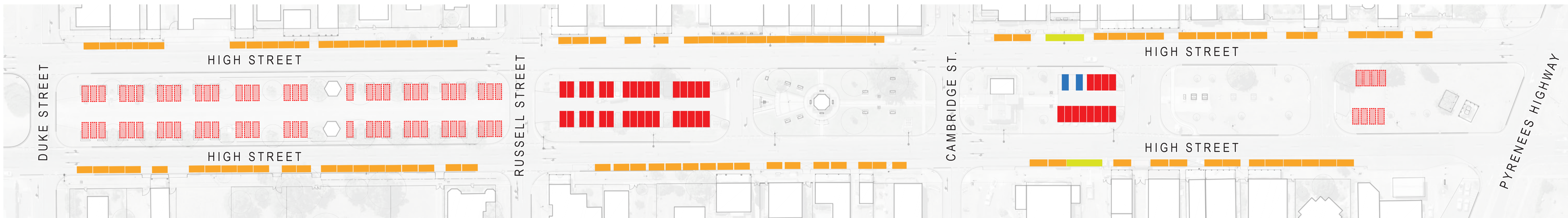


Proposed secondary street tree planting to Cambridge Street  
*Eucalyptus mannifera* 'Little Spotty' - Dwarf Spotted Gum  
6-8m high x 5m wide @ 20 years



FOR: REVIEW		REV	AMENDMENTS	DATE	BY
DRAWN: ACLA	DATE: 17.09.19	B	COUNCIL FEEDBACK	20.12.19	MB
PROJECT N°: 1924	DWG N°: 1924-MP8	C	COUNCIL FEEDBACK	31.01.20	MB
		D	COUNCIL FEEDBACK	04.02.20	MB
		E	COUNCIL FEEDBACK	12.02.20	MB





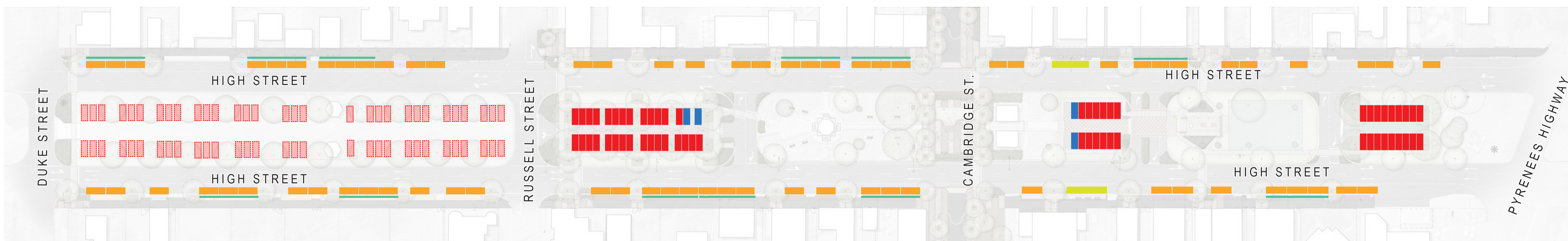
**EXISTING CONDITIONS**

- 104 on street parallel car spaces
- 44 off street 90° formalised car spaces
- 70 off street 90° informal car spaces
- 2 accessible car spaces
- 2 bus zones

TOTAL = 150 CAR SPACES (+ 70 informal car spaces)

**LEGEND**

- On street parallel car spaces
- Off street 90° formalised (sealed/ line-marked) car spaces
- Off street 90° informal (unsealed/ unlinemarked) car spaces
- Accessible car spaces
- Bus zones
- Spaces suitable for on street long vehicle space (Class A Long Vehicles)



**PROPOSED CONDITIONS**

- 72 on street parallel car spaces (or 36 on street parallel car spaces + 12 long vehicle spaces)
- 59 off street 90° formalised car spaces
- 64 off street 90° informal car spaces
- 4 accessible car spaces
- 2 bus zones


TOTAL = 131 CAR SPACES (+ 64 informal car spaces)

FOR: REVIEW		REV	AMENDMENTS	DATE	BY
DRAWN: ACLA	DATE: 17.09.19	B	COUNCIL FEEDBACK	20.12.19	MB
PROJECT N°: 1924	DWG N°: 1924-MP9	C	COUNCIL FEEDBACK	31.01.20	MB
		D	COUNCIL FEEDBACK	04.02.20	MB
		E	COUNCIL FEEDBACK	12.02.20	MB





**LEGEND**

-  Proposed High Street Avenue Trees  
*Quercus coccinea* - Scarlet Oak
-  Proposed Kerb Out-stand  
New kerb out-stand in roadway with avenue tree planting and under-storey garden bed.

**NOTES - PROPOSED STAGE 1 WORKS**

- 1** Proposed kerb out-stands with Avenue Tree planting at regular intervals along High Street in between parallel parking bays to establish a Grand Boulevard.
- 2** Reconfigure parallel car parking bay line-marking along High Street to accommodate new tree out-stands.



Establish a new Grand Boulevard along High Street  
*Quercus coccinea* - Scarlet Oak  
12m high x 8m wide @ 20 years



Proposed street trees in kerb out-stands.